

**Key-Link**  
*Railing Systems*

Arabian  
RAILING

ARABIAN ALUMINUM RAILING

## KEY-LINK ARABIAN RAILING SERIES



KEYLINKONLINE.COM

# ARABIAN ALUMINUM RAILING

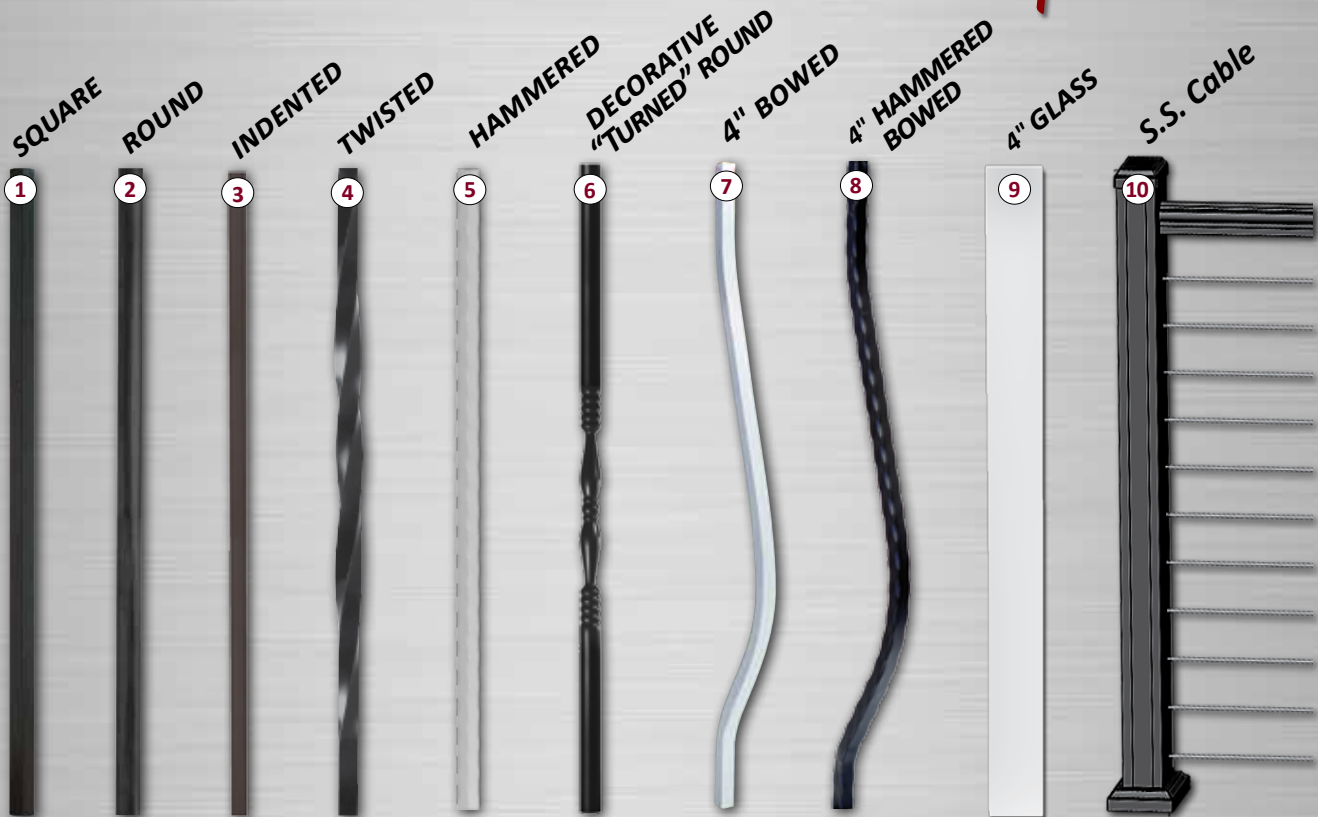


The Arabian Series features a contoured top rail in a sleek and lightweight aluminum railing system that's finished in a weather resistant AAMA 2604 powder coating. Unique full-length PVC inserts in both rails creates a tighter and quieter fit.

- 
- **1 3/4" W x 1 7/8" H Contoured Top Rail**
  - **Self-Centering Mounting Brackets**
  - **10 Infill Options • 10+ Color Choices**
  - **Rattle-Free Vinyl Lined System**
  - **Easy to Install Boxed Railing Kits**
  - **Universal/Swivel Brackets Available**
  - **Limited Lifetime Warranty**
  - **Low Maintenance Aluminum**
  - **AAMA 2604 Rated Powder Coating**
  - **Performance Engineered & Tested To ICC Standards**
  - **Manufactured in USA**
  - **Heavy Wall Extruded Aluminum**
-



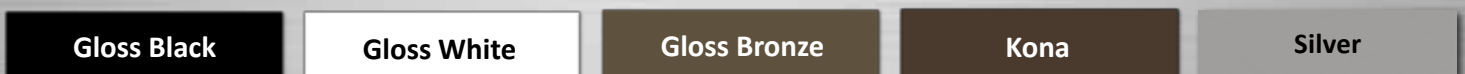
# ARABIAN ALUMINUM RAILING



*All Aluminum Balusters 3/4"*

- Somerset (#1)
- Irondale (#3)
- Hampton (#5)
- Medford (#7)
- 4" Glass Baluster (#9)
- Richmond (#2)
- Trenton (#4 & #1 Alt.)
- Dayton (#6)
- Altoona (#8)
- (for 36" x 6' Sections)
- Stainless Steel Cable Infill (#10)

## STOCK COLORS FOR ARABIAN SERIES



## SPECIAL ORDER COLORS FOR ARABIAN SERIES



# ARABIAN ALUMINUM RAILING



Square  
Balusters



Round  
Balusters





# ARABIAN ALUMINUM RAILING

ALTERNATING  
Square & Twisted  
BALUSTERS



Hammered  
Balusters





# ARABIAN ALUMINUM RAILING



Decorative  
Round  
Balusters



4" Hammered  
Bowed  
Balusters





# ARABIAN ALUMINUM RAILING

## Glass Railing

Available in 6' sections.



*Railing balusters are no longer in your line of sight when sitting and relaxing on your porch or deck.*

*The wonderful views you have worked so hard to create are now free of obstructions and visual distractions. Enjoy endless views with the Key-Link Arabian Railing w/ Glass Balusters.*



## Curved Railing

Minimum radius 24"

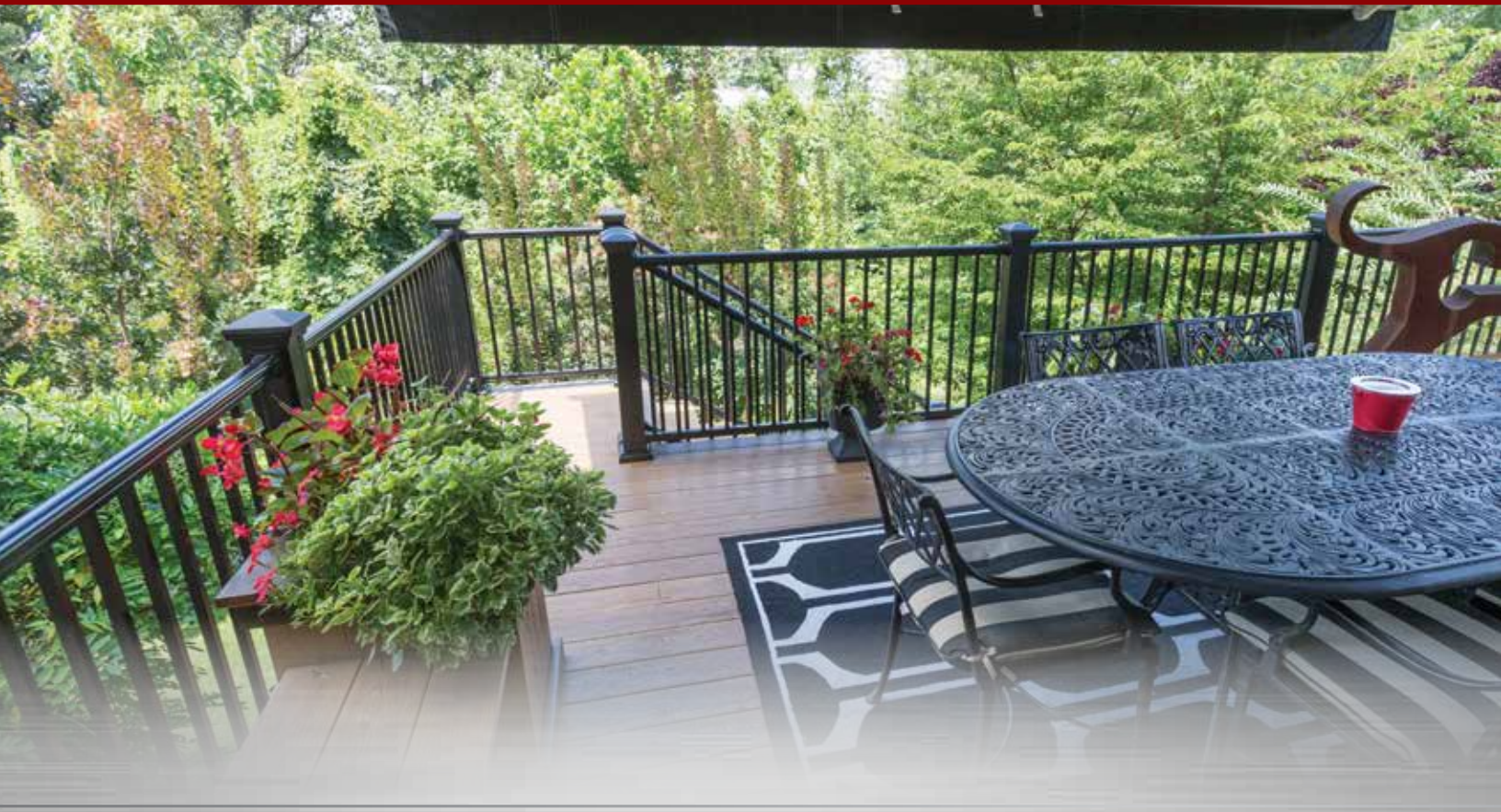


*Curved railings can be fabricated to your specifications.*

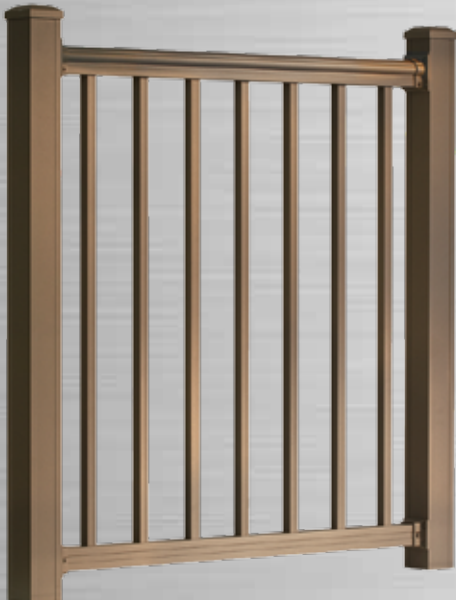




# ARABIAN ALUMINUM RAILING



Indented Baluster



4" Hammered  
Bowed Picket



4" Bowed Picket





# ARABIAN ALUMINUM RAILING

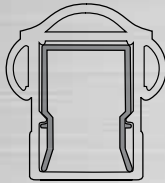


# RAILING ACCESSORIES

## ARABIAN RAIL PROFILE

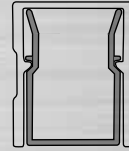
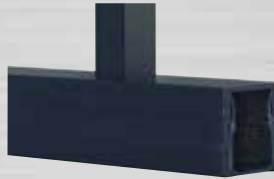
### Top Rail Specs

1 3/4" x 1 7/8"



### Bottom Rail Specs

1 1/4" x 1 1/2"



Drains in the bottom rail allow any moisture to escape.

### CROSS OVER ADAPTER

2 1/2" • 3 1/4" • 4"



Enables top rail to be installed on top of posts

## BRACKETS/ADAPTERS

### STRAIGHT TOP & BOTTOM BRACKETS

Set of 4 (2 each)



### 32° - 36° STAIR/STEP TOP & BOTTOM BRACKETS

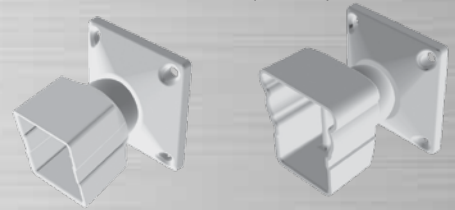
Set of 4 (2 each)



### UNIVERSAL SWIVEL MOUNTING BRACKETS

For use when up to 52 degrees is required in adjusting sections for stairs or slopes.

Set of 4 (2 each)



### HORIZONTAL SWIVEL TOP & BOTTOM BRACKETS

Set of 4 (2 each)



Maximum 40° Swivel

### VERTICAL STAIR SWIVEL TOP & BOTTOM BRACKETS

For use when an angle is required in adjusting sections for stairs or slopes.  
Set of 4 (2 each)



Maximum 30° Swivel

### 45° TOP & BOTTOM BRACKET ADAPTERS

Set of 4 (2 each)



### SIDE MOUNT POST BRACKET

For Side Mounting Railing



### 6"- 8" ROUND COLUMN BRACKET ADAPTER KIT

SET OF 4



### UNIVERSAL STEP BRACKETS

Set of 4





# RAILING ACCESSORIES



**Ball Post Cap**  
(Optional)



**Flat Post Cap**  
(Standard)



**POST TRIM RING**



CAPS/TRIM AVAILABLE IN 2½" • 3¼" • 4"

**NEWEL POSTS**  
w/ 3/8" ALUM. PLATE

Can be installed on concrete, wood or composite decking for secure installations

AVAILABLE IN  
2½" • 3¼" • 4"



**LED POST CAPS**  
2½" or 4"



Black, Bronze or White

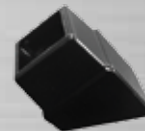
**LAMBS TONGUE**



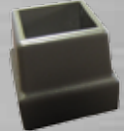
**END POST ACCENT**



**BALUSTER MOUNTS**  
Square mounts fit all balusters except round



Stair



Level



**3 RAIL OPTIONS**



PLAIN



WITH RINGS



WITH BUTTERFLY CENTERPIECE

The **3-Rail System** offers a subtle way to bring an architectural design element to your railing project.

**GINGERBREAD**  
**CORNER SCROLL**



**34 DEGREE ANGLE POST**

Specifically designed to work with ramps. Comes standard with a welded plate.

AVAILABLE IN  
2½" • 3¼" • 4"

SPECIAL ORDER  
3-Week Lead Time



The balusters go through the routed rail to the top rail. Add rings or butterfly scrolls for a more dramatic look.

# PORCH POSTS



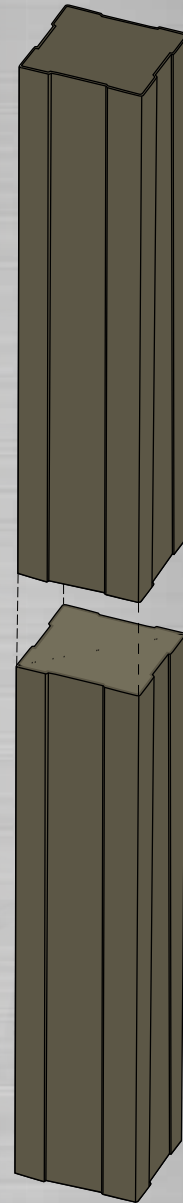
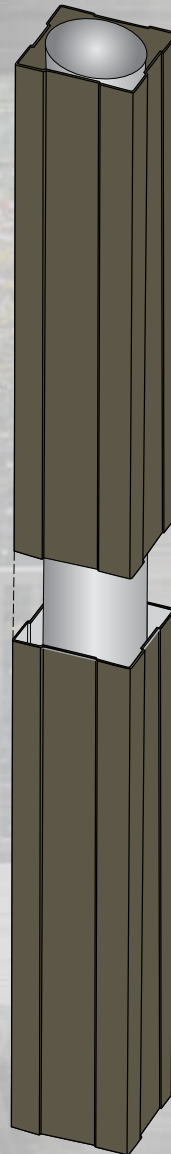
**ALUMINUM ROUND COLUMN  
TRIM/MOUNTING BRACKET**  
7½" x 7½"



**MOUNTING BRACKETS**  
Included with porch posts



3¼" x 3¼" x 108"



4" x 4" x 108"

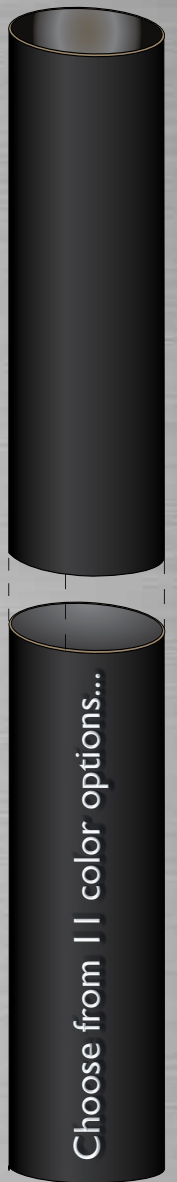


3¼"

**TRIM RING**  
All standard colors



4"



6" x 6" x 108"

Choose from 11 color options...



*These hinges have been independently tested to comply with strict safety standards, especially those relating to stringent swimming pool safety codes. Always check with your township for your local building code requirements.*

## TruClose (Regular) Multi-Adjustable Hinge



- Horizontal adjustment up to 1-1/8" & Vertical adjustment up to 3/4"
- Self closing gate rating of 55 lbs. • Dim. 3-3/4" high by 4" wide
- Gate gap variance from 7/8" to 1-1/2" • Ideal gate gap of 1-1/8"
- Molded polymer construction with adjustable stainless steel torsion spring
- Side legs wrap around fence post & edge of gate for added strength

Max Load Cap.  
375 lbs.

(Black) Model #TCAMA1 (White) Model #TCAMA2WT

## TruClose (Heavy Duty) Multi-Adjustable Hinge



- Horizontal & Vertical adjustments up to 3/4"
- Self closing gate rating of 132 lbs. • Dim. 5" high by 7" wide
- Gate gap variance from 5/8" to 1-3/8" • Ideal gate gap of 1"
- Molded polymer construction with adjustable stainless steel torsion spring
- Side legs wrap around fence post & edge of gate for added strength

Max Load Cap.  
700 lbs.

(Black) Model #TCHDMA1 (White) Model #TCHDMA1WT

## TruClose (Regular) Hinge for Round Posts



- Includes shims/adapters to fit different post and gate diameters
- Self closing gate rating of 55 lbs. • Dim. 4" high by 4" wide
- Gate gap variance from 7/8" to 1-1/2" • Ideal gate gap of 1-1/8"
- Molded polymer construction with adjustable stainless steel torsion spring
- Side legs wrap around fence post & edge of gate for added strength

Max Load Cap.  
375 lbs.

(Black) Model #TCAMA2RND

## TruClose (Heavy Duty) Hinge for Round Posts



- Includes shims/adapters to fit different post and gate diameters
- Self closing gate rating of 132 lbs. • Dim. 5" high by 4-1/8" wide
- Gate gap variance from 3/4" to 1-3/8" • Ideal gate gap of 1"
- Molded polymer construction with adjustable stainless steel torsion spring
- Side legs wrap around fence post & edge of gate for added strength

Max Load Cap.  
700 lbs.

(Black) Model #TCHDRND1-MK2

## TruClose Self-Closing Gate Hinge



- Horizontal adjustment up to 1-1/8" & Vertical adjustment up to 3/4"
- Self closing gate rating of 66 lbs. • Dim. 5" high by 4" wide
- Gate gap variance from 7/8" to 1-1/2" • Ideal gate gap of 3/4"
- Molded polymer construction with adjustable stainless steel torsion spring
- Side legs wrap around fence post & edge of gate for added strength

Max Load Cap.  
770 lbs.

(Black) Model #TCA1L2S3BT (White) Model #TCA1L2S3WT

## Heavy Duty Self-Closing S.S. Adjustable Hinge



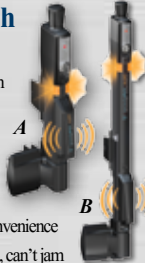
- Sold by the pair • Designed for larger, heavier vinyl gates
- Large enclosed spring provides increased closing power
- Very easy tension adjustment • Horizontally Adjustable
- Used with 2" or Larger Gate Profiles
- Post Flange: 4.5" (H) x 3.25" (W) x 1.25" (D)
- Gate Flange: 3.5" (H) x 2.75" (W) x 1.25" (D)
- 304 Series Stainless Steel/ Powder Coated

(Black) Model #NWSS-HD-SC-BK

## MAGNALatch ALERT Child Safety Latch



- NEW Visual unlatched alarm
- NEW Audible unlatched alarm
- At-a-glance Lock Indicator
- Fits to metal and wood gates
- Trusted for over 25 years
- Meets all pool barrier codes
- Re-keyable lock for security & convenience
- Magnetic latching always engages, can't jam
- Easy installation, with no special tools



A - (Black) Model #ML3AVPKA Vertical Pull Safety Latch Alert for Gates 60" or Higher Key Lockable • Gate Gap 1/2" - 1-1/2" 12-7/16" High

B - (Black) Model #ML3ATPKA Top Pull Safety Latch Alert for Gates 48" or Higher Key Lockable • Gate Gap 1/2" - 1-1/2" 20-1/2" High

For larger gaps of 1-1/2" - 2" ask about optional spacer that's available

## MAGNALatch (Non-Alert) Child Safety Latch



(Black) 10" Vertical Pull Model #ML3VPKA

(Black) 20" Top Pull Model #ML3TPKA

Accommodates Gate Gaps of 1/2" - 1-1/2"

Magna Latch (Pool code approved)

## Lockable Gate Latch



- Strong & 100% rust proof
- No need for padlocks
- Fits all gate materials
- Quick & easy installation
- Gap variance 3/8" to 1-3/8"
- Up to 6" post size

(Black) Model #LLAA  
(White) Model #LLAAW

## Lockable Gate Latch (Deluxe)



- Strong & 100% rust proof
- Operates/locks both sides
- Re-keyable 6-pin locks
- Quick & easy installation
- Gap variance 5/8" to 1-1/2"
- Up to 6" post size

(Black) Model #LLDAB-K  
(White) Model #LLDABW-K

## Lockable Gate Latch (Magnetic)



- Strong & 100% rust proof
- Operates/locks both sides
- Re-keyable 6-pin locks
- Quick & easy installation
- Gap variance 3/8" to 1-1/4"
- Post size 1-1/2" to 6"

(Black) Model #LLMKABT

## Manta Magnetic Latch



- Strong nylon material
- Self-latching, key lockable
- Re-keyable to home locks
- Reversible for L/R
- Adj. Gap 1/2" to 2"

• Positive-locking magnetic system • Includes 4 keys  
(Black) Model #MANTA-L-BK  
(White) Model #MANTA-L-WH

## LokkLatch External Access Kit



Optional Kit External Access Kit Lockable Push-Button operates latch from outside the fence.

(Black) Model #LLB  
(White) Model #LLBW

## LokkBolt Lockable Security Drop Bolt



The LokkBolt is a lockable security bolt that provides long-lasting privacy and security in a superbly stylish drop bolt for all types of gates, especially double-drive gates. LokkBolt is key-lockable

(18" Black) Model #LB118BX-KSA  
(18" White) Model #LB118BXW-KSA  
(24" Black) Model #LB124BX-KSA  
(24" White) Model #LB124BXW-KSA

## Heavy Duty Drop Pin Plate



This Base Plate offers added strength for your LokkBolt installation. It reinforces the securing ground hole. Molded, rust-free plate to add a stylish finish.

(Black) Model #LBPPBG

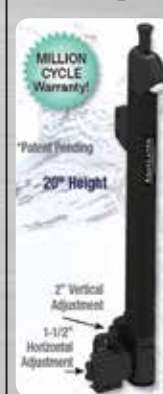
## Gate Handle



- Convenient gate opening & closing
- Fits all gates, left/right openings
- Simple & stylish
- Strong & 100% rust proof

(Black) Model #LL3GH  
(White) Model #LLHBGWT

## 20" AquaLatch w/Handle

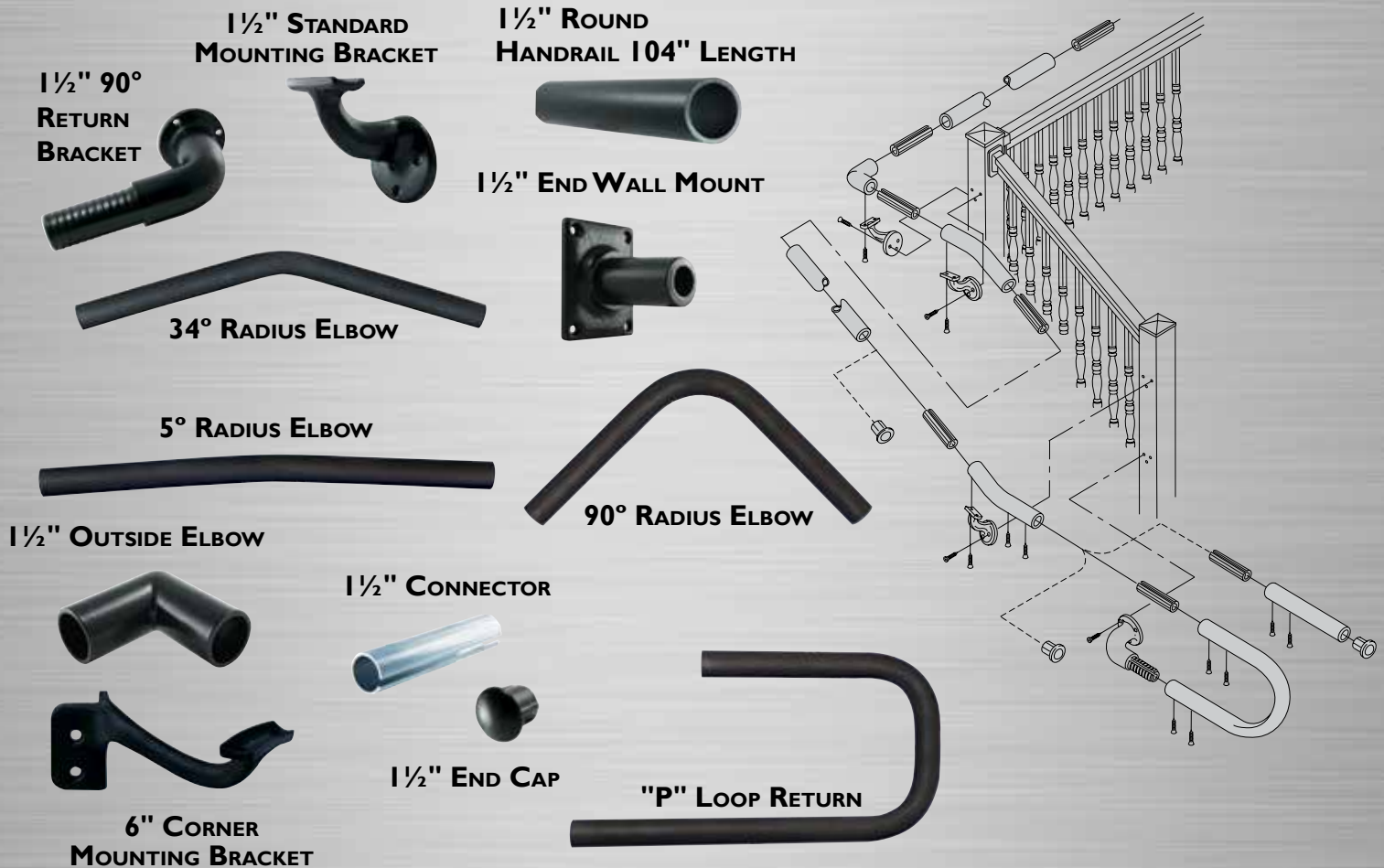


- Highly child resistant
- 45° Key lockable for EZ access
- Two keys provided
- Easy Adjustments
- Left/right hand applications
- Built-in handle available
- Automatic magnetic latching
- Easy grip release knob
- Safe-Alert™ provides a visual alert when the latch is not engaged
- Available in black or white

(Black) Model #AQUA-20-BK  
(White) Model #AQUA-20-WH



## Secondary Handrail





## STOCK COLORS

Textured Black

Textured White

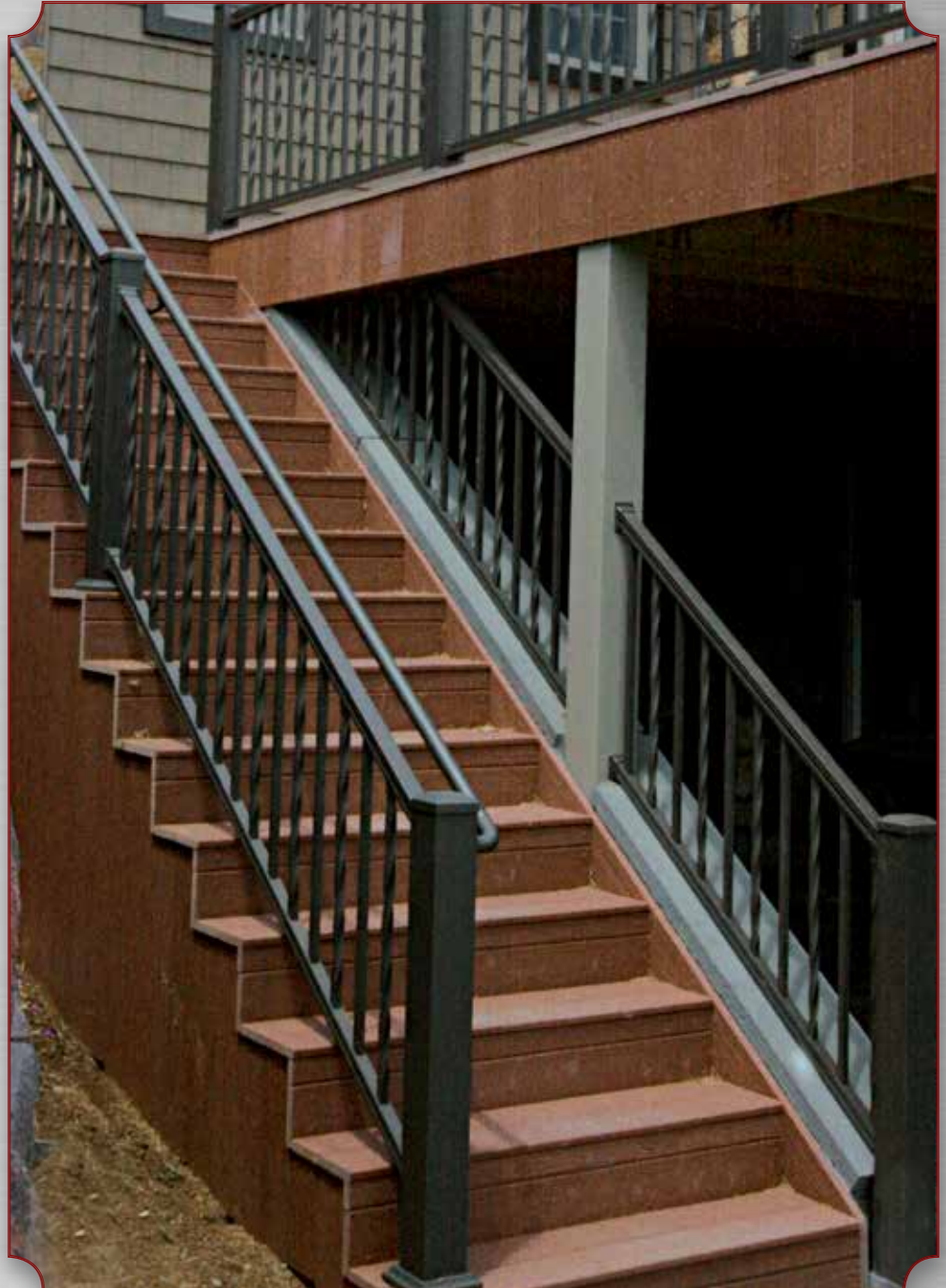
Textured Bronze

Gloss Black

Gloss White

Gloss Bronze

Silver



## Secondary Railing Special Order Colors

Speckled Walnut

Brownstone

Gloss Beige

Hunter Green

Redwood

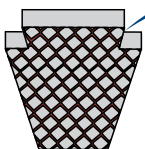
Kona



# PHOTO GALLERY



150 Orlan Road | New Holland, PA 17557



**Key-Link**  
Fencing & Railing

KeyLinkOnline.com

VERS.KFRMK160119-R1

**DEALER**  
Item# DIARRCAT

